



Life with Sustainable

livewithnature

SAWAMURA Fiber Material Division



PET  **Clothing Material**
SAWAMURA SUSTAINABLE PROGRAM
SAWAMURA Fiber Material Division

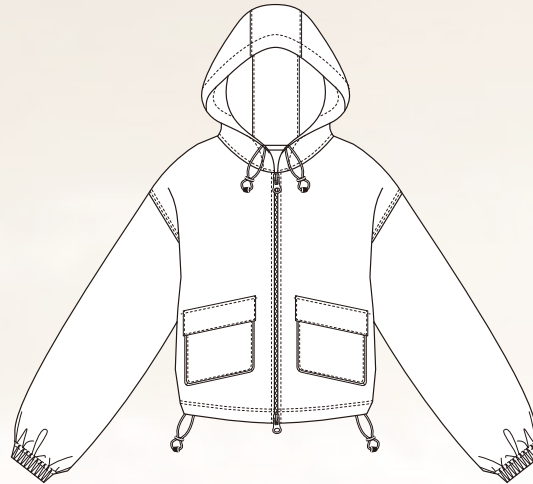
Material No. :MP 2003 ES-3L

Material :NYDTY Taffeta 3L

Size : 140cm x 48m

Comp. : 100% Recycle Poly

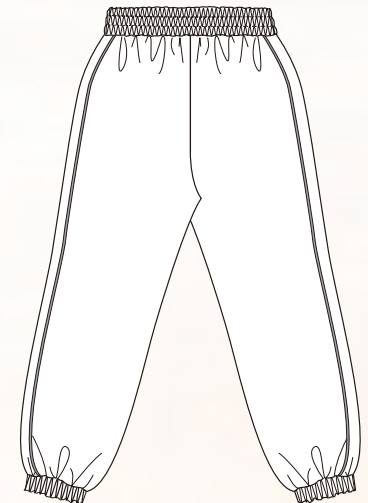
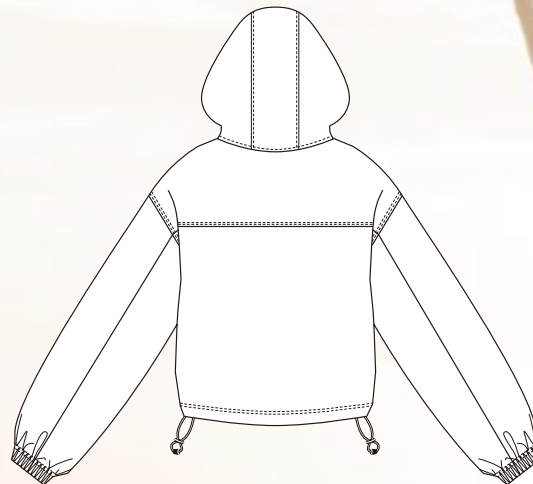
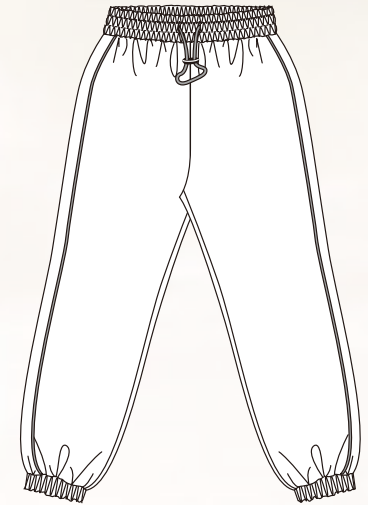
No.22W-10101FW



No.22W-10102FW



No.22W-10103FW



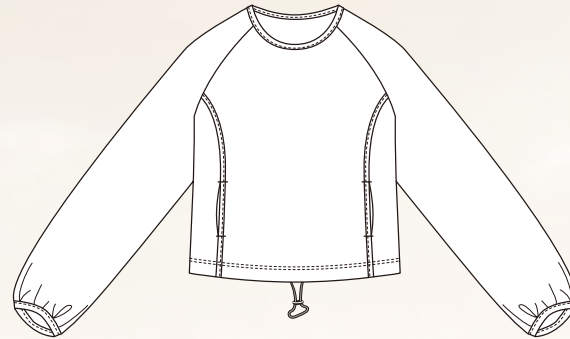
Material No. :MP 2003 ES-2.5L

Material :NYDTY Taffeta 2.5L

Size : 142cm x 48m

Comp. : 100% Recycle Poly

No.22W-10104FW



No.22W-10105FW



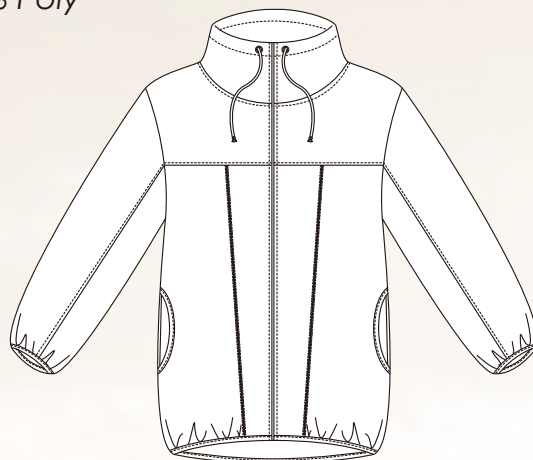
Material No. :SW 10200 R

Material :Recycle Poly Fleece

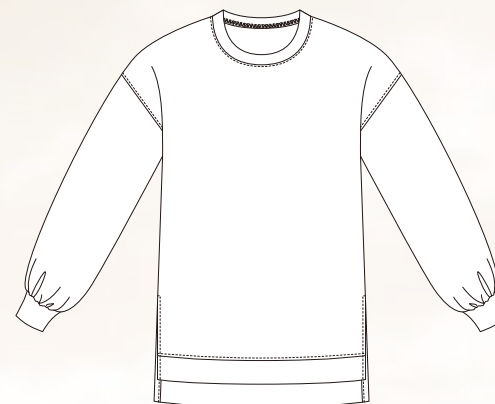
Size : 152cm x 35m

Comp. : 87% Recycle Poly / 13% Poly

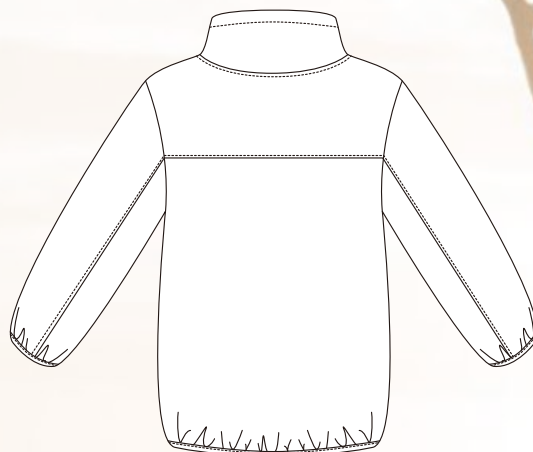
No.22W-10106FW



No.22W-10107FW



No.22W-10108FW



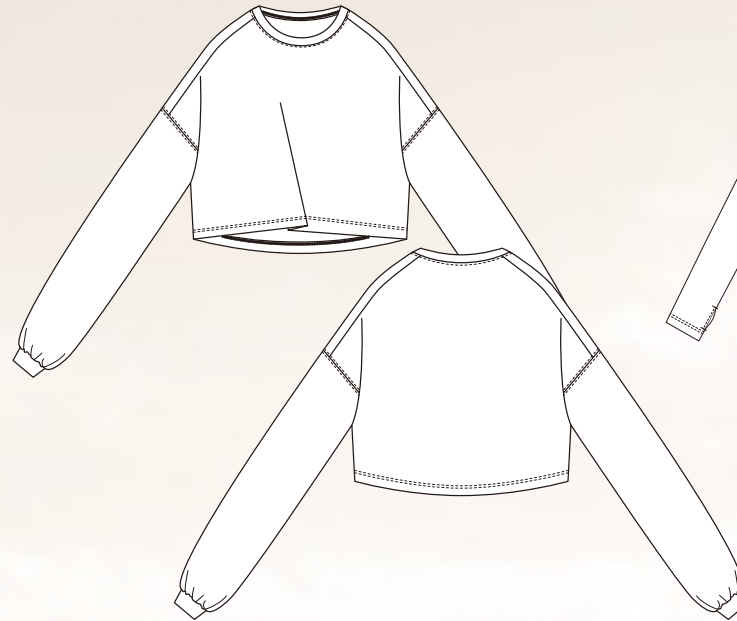
Material No. :EC 8370 FD

Material :Dot Mesh Half 145GSM

Size : 150cm x 50m

Comp. : 57% Recycle Poly / 43% Poly

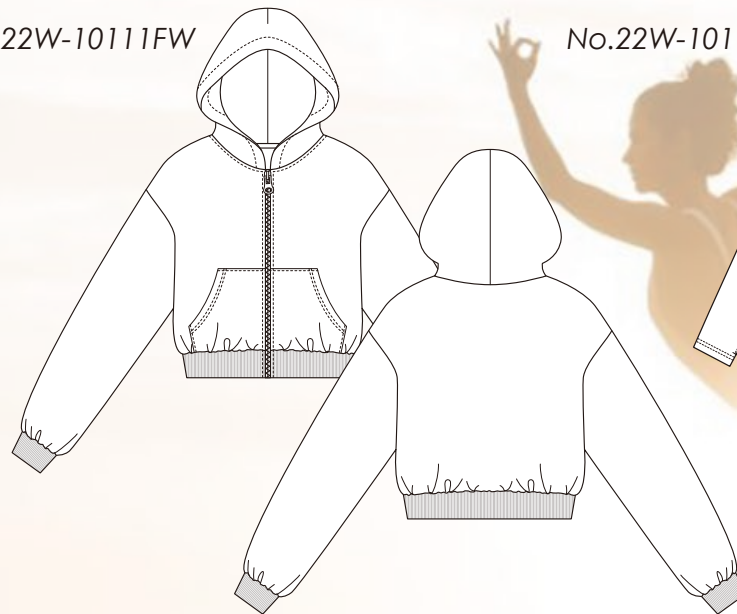
No.22W-10109FW



No.22W-10110FW



No.22W-10111FW



No.22W-10112FW



Material No. :SW 6045 ECO-C0

Material :Tricot Rip

Size : 150cm x 50 m

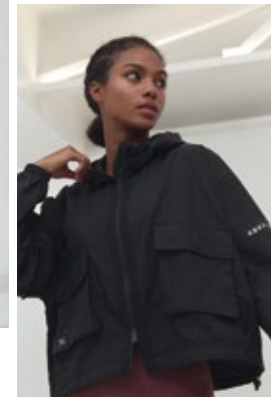
Comp. : 100% Recycle Poly

No.22W-10113FW



No.22W-10114FW







HEAD OFFICE 1-4-8, Minamihonmachi, Chuo-Ku, Osaka, 541-0054 Japan

Phone : 06-6264-1234

TOKYO OFFICE 17F, 2-30, Hamacho, Nihonbashi, Chuo-Ku, 103-0007 Japan

Phone : 03-3663-8551

NAGOYA OFFICE 4F, Sawamura Bldg., 1-10-25, Marunouchi, Naka-Ku Nagoya 460-0002 Japan

Phone : 080-4813-9488

WEB : www.sawamura-net.co.jp